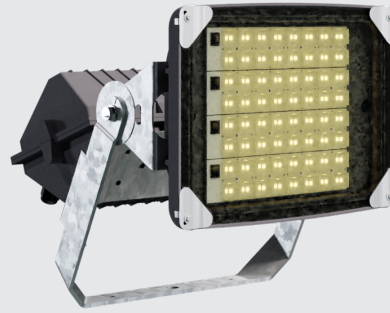


# KRATOS I LED FLOOD LIGHT



## Product Variations

Type	Driving Current	Typical Power	Luminous Flux	
	(mA)	(W)	(lm) Nominal	(lm) Effective
SI 3	660	200	30 372	24 377
	700	215	32 076	25 661
SI 4	600	244	37 354	29 883
DB 3	550	330	51 846	41 477
	660	400	60 943	48 754
	700	430	64 151	51 321
DB 4	600	488	74 707	59 766
TRI 3	660	600	91 413	73 131
	700	645	96 227	76 982
TRI 4	600	733	112 061	89 649
QUAD 3	550	661	103 692	82 954
	660	800	121 884	97 508
	700	859	128 302	102 642
QUAD 4	600	977	149 415	119 532

## Product Information

Design	
Manufacturing	Locally designed and manufactured
Luminaire and control gear housing	High-pressure die-cast LM6 aluminum finished with polyester epoxy powder coating
Clips and fasteners	304 Grade stainless steel   316 Grade stainless steel *
Diffuser	4mm clear tempered glass   High impact PC *
Optics	Optical grade acrylic (PMMA) Zhaga "Book 15" compliant lenses
Colour	Dark grey standard   Unpainted or other colours *
Mounting options	Adjustable stirrup mounting system suitable for mounting on high mast structures and conventional building surfaces

Technical Data				
Luminaire Compliance standards	SANS / IEC 60598-2-3 SANS 475			
Surge protection	6+10kV / 10+10kA			
Power supply	220V to 240V AC 50/60 Hz			
Power factor	0.98			
Insulation protection	Class 1			
Weight	SI	DB	TRI	QUAD
	14 kg	24 kg	34 kg	49 kg
Lifetime	Luminaire	Up to 20 year on luminaire body Up to 7 year on internal components		

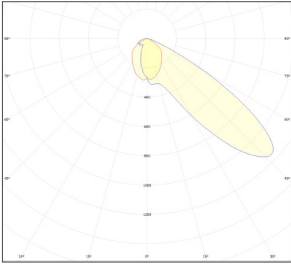
\*Available on request

Lighting Data			
Design life	up to 100 000 hours		
Typical lumen maintenance	L90 @ >100 000 hours		
CRI	70	80 *	
Light Output Ratio (LOR)	up to 85%		
Colour Temperature	3000K *	4000K	5000K *
Operating temperature	-30°C to 45°C		
Dimmable	1-10V *	DALI *	D4i *

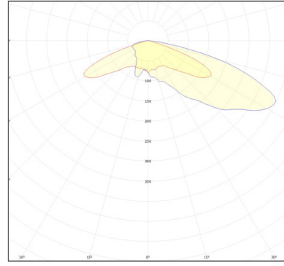


## Optics

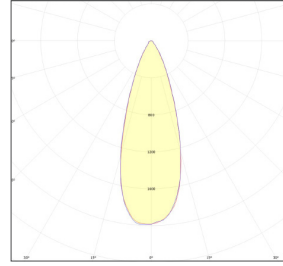
Optic: 41807



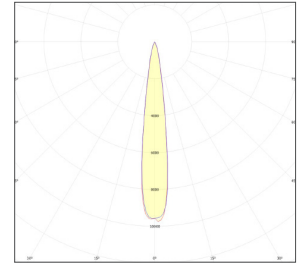
Optic: 41815



Optic: 41819

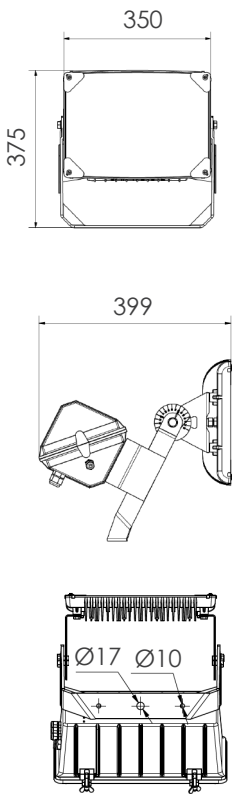


Optic: 41821

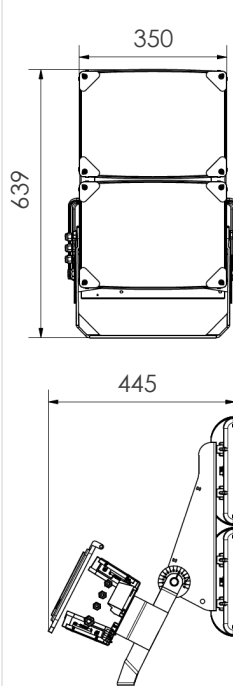


## Dimensions

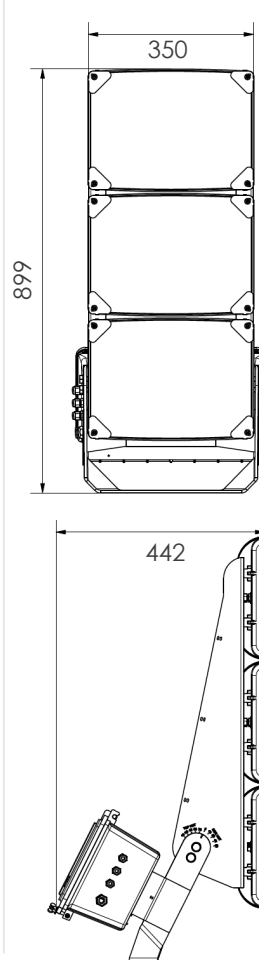
SI



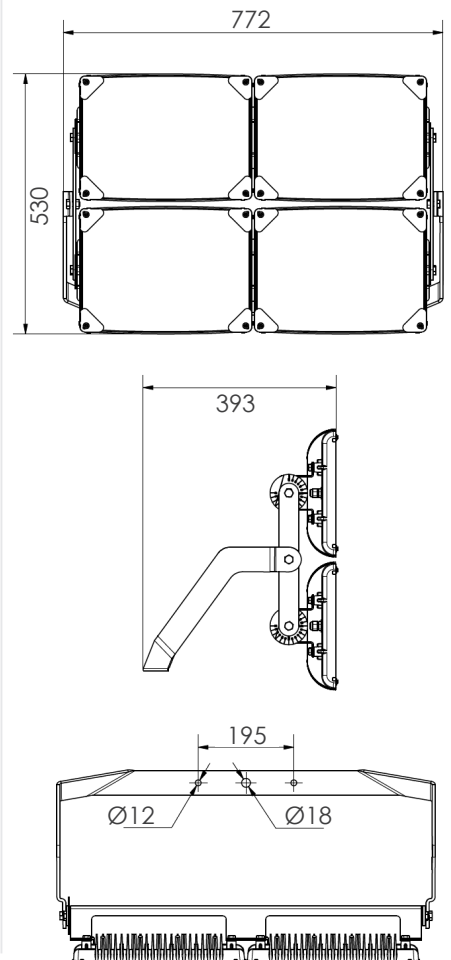
DB



TRI



QUAD



### Disclaimer

Due to the rapid development in LED technology the performance values, power consumption and lumen output levels stated above are subject to change without prior notice. For any requirements not covered in the above variations please contact us for a customized solution.

### IMPORTANT NOTES

- (1) Measurement precision for flux +/- 5%, for efficacy +/- 6%, for CRI +/- 1.5
- (2) Lumen maintenance L90 = 90% of initial flux @ 1a 35°C / 100 000hrs

Technical changes and printing errors reserved • Errors and Omissions Excepted

### JOHANNESBURG (HQ)

4 Branch Rd, Driehoek, Germiston, 1401  
P.O. Box 1183 Germiston  
Tel: +27 (0)11 825 3144/5  
genluxsales@actom.co.za

### BLOEMFONTEIN

20 Lombard Street, Hilton, Bloemfontein, 9300  
P.O. Box 914, Bloemfontein, 9300  
Tel: +27 (0)51 448 1417  
Email: genluxsales@actom.co.za

### CAPE TOWN

12 Hawkins Avenue, Epping Industria No 1, 7460  
P.O. Box 276, Eppindust, Cape 7475  
Tel: +27 (0)21 532 2000  
genluxCT@actom.co.za

### DURBAN

70 Solomon Mahlangu Drive, Rossburgh 4094  
P.O. Box 922, Durban 4000  
Tel: +27 (0)31 465 4170  
genluxKZN@actom.co.za

### GQEBERHA

200 Kempston Road, Sidwell, Gqeberha 6001  
P.O. Box 3503, North End, Gqeberha 6056  
Tel: +27 (0)41 451 5641  
genluxPE@actom.co.za



www.genluxlighting.co.za  
011 825 3144  
genluxsales@actom.co.za

