

GEN ZERO LED STREET LIGHT



Product Variations

Driving Current (mA)	Typical Power (W)	Luminous Flux	
		(lm) Nominal	(lm) Effective
200	16	2 530	1 901
250	20	3 125	2 349
300	23	3 710	2 789
350	27	4 285	3 221
400	30	4 850	3 645
450	34	5 404	4 062
500	38	5 947	4 471
550	43	6 481	4 871
600	47	7 004	5 265
650	51	7 517	5 650
700	56	8 019	6 028

Product Information

Design	
Manufacturing	Locally designed and manufactured
Luminaire and control gear housing	High-pressure die-cast LM6 aluminum finished with polyester epoxy powder coating
Clips and fasteners	304 Grade stainless steel 316 Grade stainless steel *
Diffuser	4mm clear tempered glass High impact PC *
Optics	Optical grade acrylic (PMMA) Zhaga "Book 15" compliant lenses
Colour	Dark grey standard Unpainted or other colours *
Mounting options	Rear spigot entry tapering from 45mm to 42mm Ø Spigot mounting depth 125mm

Technical Data	
Luminaire Compliance standards	SANS / IEC 60598-2-3 SANS 475
Surge protection	6+10kV / 10+10kA
Power supply	220V to 240V AC 50/60 Hz
Power factor	0.98
Insulation protection	Class 1
Weight	4.2 kg
Lifetime	Luminaire Up to 20 year on luminaire body Up to 7 year on internal components

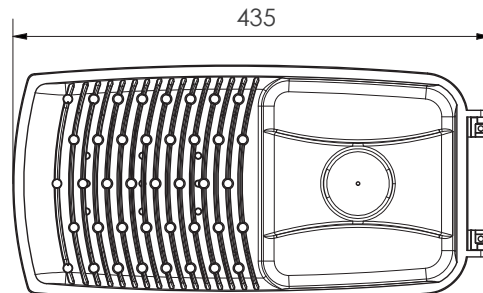
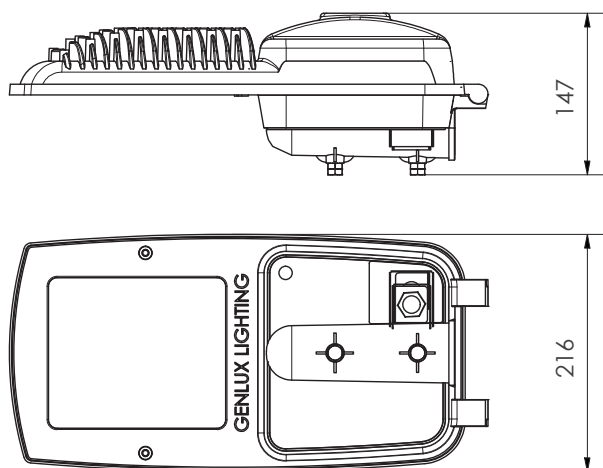
*Available on request

Lighting Data	
Design life	up to 100 000 hours
Typical lumen maintenance	L90 @ >100 000 hours
CRI	70 80 *
Light Output Ratio (LOR)	up to 85%
Colour Temperature	3000K * 4000K 5000K *
Operating temperature	-30°C to 45°C
Dimmable	1-10V * DALI * D4i *



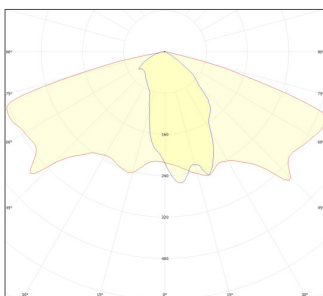
Dimensions

Luminaire Dimensions

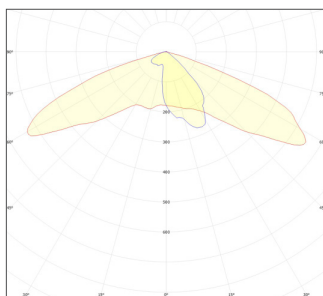


Optics

Optic: 41801



Optic: 41810



Disclaimer

Due to the rapid development in LED technology the performance values, power consumption and lumen output levels stated above are subject to change without prior notice. For any requirements not covered in the above variations please contact us for a customized solution.

IMPORTANT NOTES

- (1) Measurement precision for flux +/- 5%, for efficacy +/- 6%, for CRI +/- 1.5
- (2) Lumen maintenance L90 = 90% of initial flux @ 1a 35°C / 100 000hrs

Technical changes and printing errors reserved • Errors and Omissions Excepted

JOHANNESBURG (HQ)

4 Branch Rd, Driehoek, Germiston, 1401
P.O. Box 1183 Germiston
Tel: +27 (0)11 825 3144/5
genluxsales@actom.co.za

BLOEMFONTEIN

20 Lombard Street, Hilton, Bloemfontein, 9300
P.O. Box 914, Bloemfontein, 9300
Tel: +27 (0)51 448 1417
Email: genluxsales@actom.co.za

CAPE TOWN

12 Hawkins Avenue, Epping Industria No 1, 7460
P.O. Box 276, Eppingindust, Cape 7475
Tel: +27 (0)21 532 2000
genluxCT@actom.co.za

DURBAN

70 Solomon Mahlangu Drive, Rossburgh 4094
P.O. Box 922, Durban 4000
Tel: +27 (0)31 465 4170
genluxKZN@actom.co.za

GQEBERHA

200 Kempston Road, Sidwell, Gqeberha 6001
P.O. Box 3503, North End, Gqeberha 6056
Tel: +27 (0)41 451 5641
genluxPE@actom.co.za



www.genluxlighting.co.za
011 825 3144
genluxsales@actom.co.za

