



GENLUX LIGHTING

a lighting technology company

OLYMPIA HID FLOODLIGHT



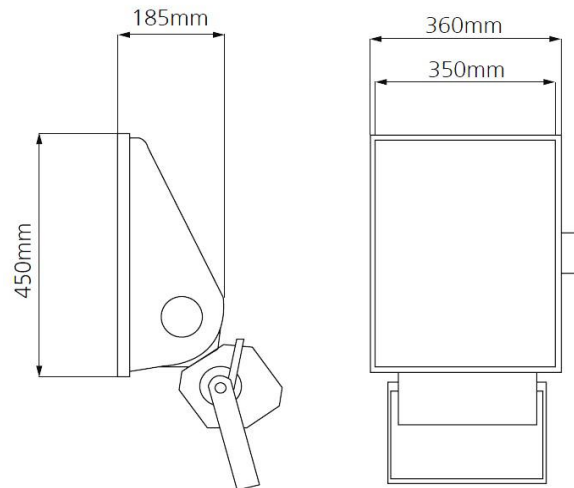
GENERAL TECHNICAL DATA & WARRANTY INFORMATION

Typical applications:	<ul style="list-style-type: none"> • Industrial lighting • Security and perimeter lighting • High mast applications • Sporting field applications • Facade and decorative lighting applications
Light source:	HID
Lamp options:	<ul style="list-style-type: none"> • HPS • MH
Lamp holder:	Porcelain GES/ E40 lamp holder
Lamp cup holder:	High-pressure die-cast LM6 aluminum
Reflector:	Chemically brightened high purity anodized aluminum. Medium beam angle reflector made from a dimpled aluminum. Narrow beam angle reflector made from a smooth finish aluminum.
IP Rating:	IP66
Luminaire housing:	High-pressure die-cast LM6 aluminum body, power coated in corrosion-resistant epoxy powder.
Luminaire clips and fasteners:	All nuts, bolts, screws and corner clamps are manufactured from stainless steel. 304 Grade* stainless steel [*316 Grade available on request]
Diffuser:	5mm heat-tempered and impact-resistant glass, sealed over a silicone gasket.
Mounting and mounting options:	Galvanized stirrup bracket with an aiming protractor and a locking system suitable for mounting to wall, frame or pole. <ul style="list-style-type: none"> • Standard stirrup bracket for wall or frame mounting • Pole mounting bracket on request
Windage area:	0.245 m ²
Beam angle options:	<ul style="list-style-type: none"> • Narrow beam angle (NB) • Medium beam angle (MB) • Wide beam angle (WB)
Control gear:	The choke, capacitor and ignitor are all fitted to a removable gear tray [Control gear available in remote control for high mast lighting.]
Corrosion resistance:	Suitable for coastal environments
Electrical connection:	A three way 5 amp connector block provided in the gear box
Power supply:	220V to 240V AC 50/60 Hz
Insulation classification:	Class 1
Weight:	13.62kg – 21.36kg
Compliance standard/s:	<ul style="list-style-type: none"> • SANS 60598-2-5 • SANS 475
Warranty:	<ul style="list-style-type: none"> • 20 year warranty on luminaire body • 12 month warranty on internal components <p>[This warranty only covers defects or malfunctions caused during the manufacturing process or premature component failures that occur under normal operating conditions]</p>



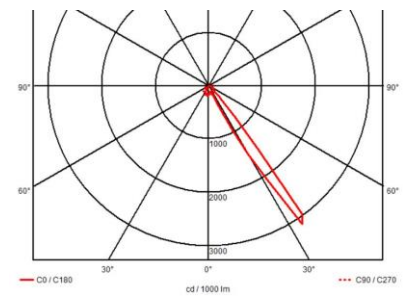
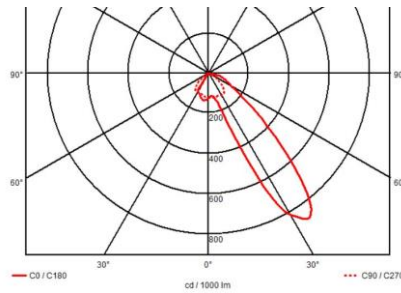
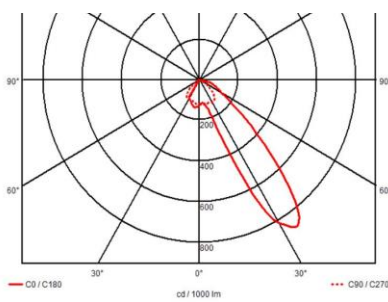
OLYMPIA HID FLOODLIGHT

DIMENSIONS

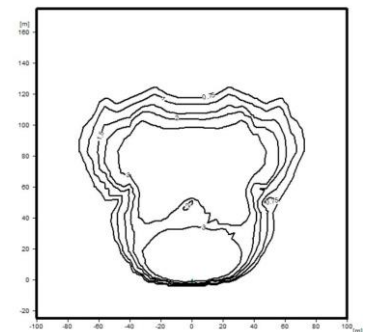
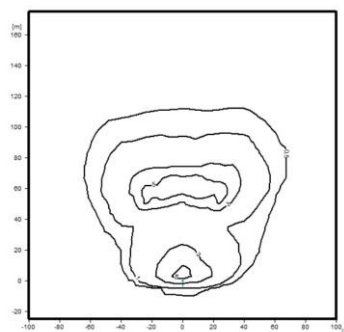
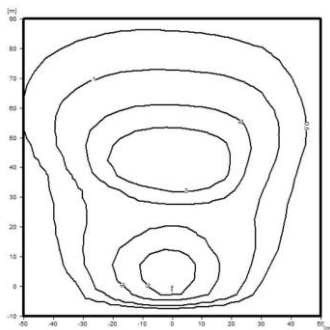


TYPICAL LIGHT DISTRIBUTION OPTIONS*

- POLAR DIAGRAMS



- ISOLUX DIAGRAMS



WB Reflector

MB Reflector

NB Reflector

- *Other light distribution options available on request.
- For best light distribution option please request a lighting design for specific application.



OLYMPIA HID FLOODLIGHT

PRODUCT VARIATIONS & ORDERING CODES

Typical Power Consumption (W)	Effective Lumen output *1 (lm)	Efficacy (lm/W)	Weight (Kg)	Ordering Code		
				Narrow	Medium	Wide
High Pressure Sodium (HPS)						
250	25 323	101	13.62	22085B	22084P	-
400	36 480	91	14.36	22087P	22086P	-
600	68 400	114	21.36	-	22097	22097WB
Metal Halide (MH)						
250	15 200	60	13.62	22089	22088P	-
400	31 920	80	14.36	22091P	22090P	-

KEY's & IMPORTANT NOTES

(*1) The above lumen outputs are based on the typical performance characteristics of commercially available HID lamps

- **E.&O.E.** (errors and omissions excepted)
- **Important note:**
Power consumption and lumen output levels stated above are subject to change without prior notice.