



# GENLUX LIGHTING

a lighting technology company

## SATURN HID



### GENERAL TECHNICAL DATA & WARRANTY INFORMATION

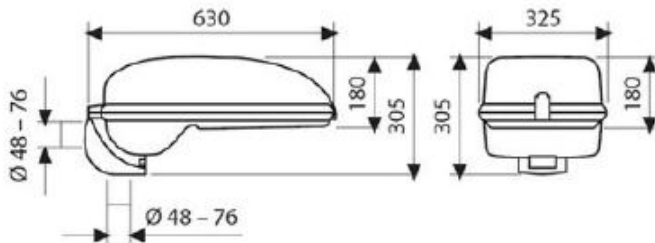
<b>Typical applications:</b>	<ul style="list-style-type: none"> <li>• Class A Roadway lighting</li> <li>• Highway and intersection lighting</li> <li>• Parking areas</li> <li>• Perimeter lighting, security and development lighting</li> <li>• Residential and commercial areas</li> </ul>
<b>Light source:</b>	HID
<b>Lamp options:</b>	<ul style="list-style-type: none"> <li>• HPS</li> <li>• MH</li> <li>• MV</li> </ul>
<b>Lamp holder:</b>	Porcelain ES/E27 and GES/E40 lamp holder with horizontal and vertical focusing device
<b>Reflector:</b>	Adjustable reflector made in high purity aluminium. A metallised reflector which optimises the efficiency of the reflectance therefore zero light pollution. Cut off optic available with flat glass version.
<b>IP Rating:</b>	IP66 (Lamp and gear compartment). Cable gland: IP68
<b>Luminaire housing:</b>	High-pressure die-cast EN44100 aluminum body, power coated in corrosion-resistant epoxy powder.
<b>Luminaire clips and fasteners:</b>	Access to the luminaires optics made in one operation only due to the one fore stainless steel clip, comes with a lid stay device. One stainless steel clip.
<b>Diffuser:</b>	<ul style="list-style-type: none"> <li>• Flat glass diffuser (FLAT)</li> <li>• Curved glass bowl* (BOWL)</li> <li>• Clear UV resistant polycarbonate bowl* (PC BOWL)</li> </ul> [*Available on request]
<b>Impact protection grade:</b>	IK08
<b>Windage area:</b>	<ul style="list-style-type: none"> <li>• Flat glass diffuser: 0.1134 m<sup>2</sup></li> <li>• Curved glass bowl*: 0.1764 m<sup>2</sup></li> <li>• Curved PC bowl*: 0.1764 m<sup>2</sup></li> </ul>
<b>Control gear:</b>	Galvanised sheet material gear plate
<b>Corrosion resistance:</b>	Suitable for coastal environments
<b>Spigot</b>	76mmØ Bottom entry: tilt from 0°, 5°, 10° or 15° -Side entry pole: tilt from 0° or 5
<b>Power supply:</b>	220V to 240V AC 50 Hz
<b>Insulation classification:</b>	Class 1
<b>Weight:</b>	12kg – 14kg
<b>Compliance standard/s:</b>	<ul style="list-style-type: none"> <li>• SANS 60598-2-3</li> <li>• SANS 475</li> </ul>
<b>Warranty:</b>	<ul style="list-style-type: none"> <li>• 15 year warranty on luminaire body</li> <li>• 12 month warranty on internal components</li> </ul> [This warranty only covers defects or malfunctions caused during the manufacturing process or premature component failures that occur under normal operating conditions]



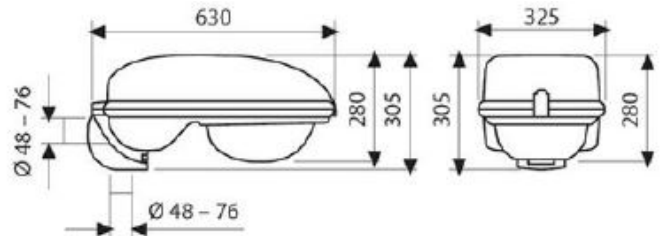
**SATURN HID**

**DIMENSIONS**

Flat Glass Diffuser

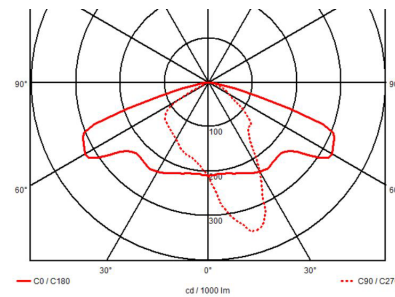
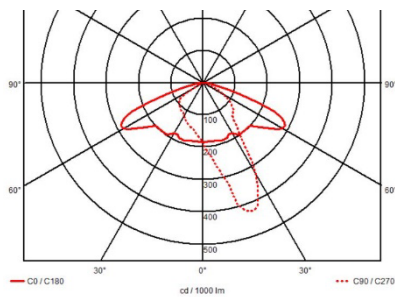


Curved glass/ PC bowl diffuser\*

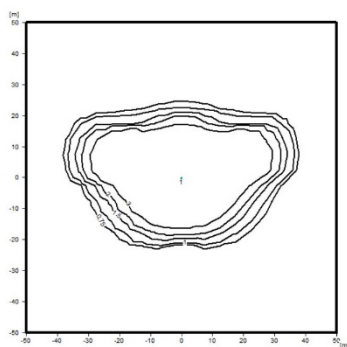


**TYPICAL LIGHT DISTRIBUTION OPTIONS\***

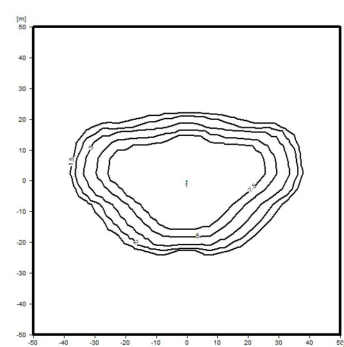
- POLAR DIAGRAMS



- ISOLUX DIAGRAMS



**250W HPS**



**400W HPS**

- \*Other light distribution options available on request.
- For best light distribution option please request a lighting design for specific application.



# SATURN HID

## PRODUCT VARIATIONS & ORDERING CODES

Typical Power Consumption (W)	Effective Lumen output *1 (lm)	Efficacy (lm/W)	Weight (Kg)	Ordering Code
<b>High Pressure Sodium (HPS)</b>				
250	31 600	126	12	23150   KIT
400	56 500	141	13.3	23170   KIT
600	90 000	150	14	23185
<b>Metal Halide (MH)</b>				
250	18 000	72	12	23160
400	36 500	91	13.3	23180
<b>Mercury Vapour (MV)</b>				
250	14 000	56	12	23190

### KEY's & IMPORTANT NOTES

(\*1) The above lumen outputs are based on the typical performance characteristics of commercially available HID lamps

- **E.&O.E.** (errors and omissions excepted)
- **Important note:**  
Power consumption and lumen output levels stated above are subject to change without prior notice.