



SATURN HID



GENERAL TECHNICAL DATA & WARRANTY INFORMATION

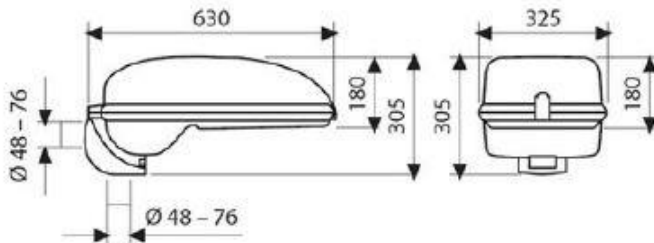
Typical applications:	<ul style="list-style-type: none"> • Class A Roadway lighting • Highway and intersection lighting • Parking areas • Perimeter lighting, security and development lighting • Residential and commercial areas
Light source:	HID
Lamp options:	<ul style="list-style-type: none"> • HPS • MH • MV
Lamp holder:	Porcelain ES/E27 and GES/E40 lamp holder with horizontal and vertical focusing device
Reflector:	Adjustable reflector made in high purity aluminium. A metallised reflector which optimises the efficiency of the reflectance therefore zero light pollution. Cut off optic available with flat glass version.
IP Rating:	IP66 (Lamp and gear compartment). Cable gland: IP68
Luminaire housing:	High-pressure die-cast EN44100 aluminum body, power coated in corrosion-resistant epoxy powder.
Luminaire clips and fasteners:	Access to the luminaires optics made in one operation only due to the one fore stainless steel clip, comes with a lid stay device. One stainless steel clip.
Diffuser:	<ul style="list-style-type: none"> • Flat glass diffuser (FLAT) • Curved glass bowl* (BOWL) • Clear UV resistant polycarbonate bowl* (PC BOWL) [*Available on request]
Impact protection grade:	IK08
Windage area:	<ul style="list-style-type: none"> • Flat glass diffuser: 0.1134 m² • Curved glass bowl*: 0.1764 m² • Curved PC bowl*: 0.1764 m²
Control gear:	Galvanised sheet material gear plate
Corrosion resistance:	Suitable for coastal environments
Spigot	76mmØ Bottom entry: tilt from 0°, 5°, 10° or 15° -Side entry pole: tilt from 0° or 5
Power supply:	220V to 240V AC 50 Hz
Insulation classification:	Class 1
Weight:	12kg – 14kg
Compliance standard/s:	<ul style="list-style-type: none"> • SANS 60598-2-3 • SANS 475
Warranty:	<ul style="list-style-type: none"> • 15 year warranty on luminaire body • 12 month warranty on internal components [This warranty only covers defects or malfunctions caused during the manufacturing process or premature component failures that occur under normal operating conditions]



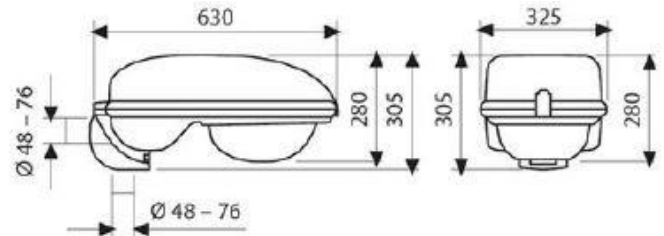
SATURN HID

DIMENSIONS

Flat Glass Diffuser

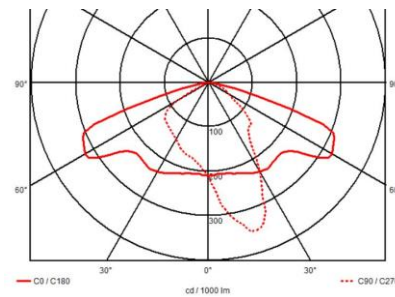
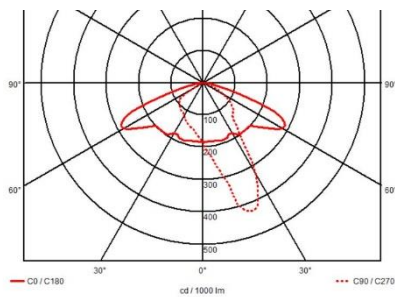


Curved glass/ PC bowl diffuser*

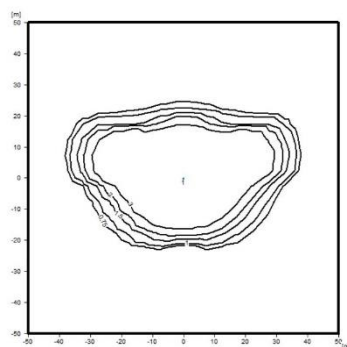


TYPICAL LIGHT DISTRIBUTION OPTIONS*

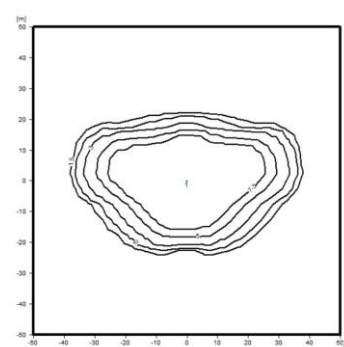
- POLAR DIAGRAMS



- ISOLUX DIAGRAMS



250W HPS



400W HPS

- *Other light distribution options available on request.
- For best light distribution option please request a lighting design for specific application.



SATURN HID

PRODUCT VARIATIONS & ORDERING CODES

Typical Power Consumption (W)	Effective Lumen output *1 (lm)	Efficacy (lm/W)	Weight (Kg)	Ordering Code
High Pressure Sodium (HPS)				
250	31 600	126	12	23150 KIT
400	56 500	141	13.3	23170 KIT
600	90 000	150	14	23185
Metal Halide (MH)				
250	18 000	72	12	23160
400	36 500	91	13.3	23180
Mercury Vapour (MV)				
250	14 000	56	12	23190

KEY's & IMPORTANT NOTES

(*1) The above lumen outputs are based on the typical performance characteristics of commercially available HID lamps

- **E.&O.E.** (errors and omissions excepted)
- **Important note:**
Power consumption and lumen output levels stated above are subject to change without prior notice.