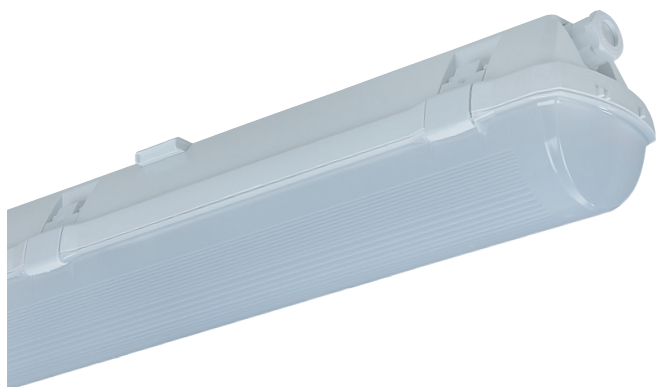




GENLUX LIGHTING

a lighting technology company

A division of
ACTOM (Pty) LTD



CHI EVO LED WEATHERPROOF INDUSTRIAL LED LIGHTING

IP66



LED TECHNICAL DATA

- Light source: High powered LED Light Engine.
- LED Options:

Wattage (W)	Total Luminous Flux (lm)	Efficacy (lm/W)	Nett Weight (kg)
2 ft. (662 mm)			
10W	1290 lm	129 lm/W	1.3 kg
12W	1550 lm	129 lm/W	1.2 kg
15W	1970 lm	131 lm/W	1.3 kg
4 ft. (1272 mm)			
18W	2390 lm	133 lm/W	1.9 kg
22W	2940 lm	134 lm/W	1.7 kg
30W	4000 lm	133 lm/W	1.9 kg
46W	5880 lm	128 lm/W	1.9 kg
5 ft. (1572 mm)			
22W	2930 lm	133 lm/W	2.3 kg
27W	3650 lm	135 lm/W	2.2 kg
37W	5040 lm	136 lm/W	2.3 kg
58W	7350 lm	127 lm/W	2.3 kg

- Colour temperature options:
 - 3000K
 - 4000K
 - 5000K
 - 6500K
- LED life cycle: 50 000 hours
- Performance level: L80 B20
- Colour Rendering Index options:
 - > 80 CRI
 - > 90 CRI (3000K & 4000K)

LUMINAIRE TECHNICAL DATA

- IP rating: IP66.
- Housing material: Grey polycarbonate body UV stabilised and impact-resistant body.
- Clips: Polyamide with 15% glass fiber or stainless steel with polyamide.

- Reflector: Rolled stainless steel sheet metal reflector with white epoxy powder coat (RAL 9003). High reflectance parabolic aluminium reflector available on request.
- Protection grade: IK10.
- Mounting options:
 - Suspended (SUSP)
 - Ceiling mounted (CEIL)
 - Wall mounted (WALL)
- Control gear options:
 - Standard control gear (STD)
 - Emergency back-up (EMG)
 - DALI control gear (DALI)
 - Emergency back-up with DALI (EMG-DALI)
 - Microwave motion sensor (SNS)
- Gaskets: Polyurethane (PUR), foamed in-body groove gasket.
- Cable glands: Screwed PG 13,5 (SCR), or rubber (RUBB)
- Terminal Block: Push-in type quick connect, three-pole (basic version) or traditional screw terminal block.
- Accessories: Stainless steel hooks and brackets and wire guard.



- Insulation classification: Class I.
- Wiring options:
 - Single phase wiring cables for through wiring (1F)
 - 3 Phase wiring cables for through wiring (3F)
- Power supply: 220V to 240V AC 50 Hz.

APPLICATION

- Industrial, indoor and outdoor applications
- Garage lighting
- Factory applications
- Warehouse and workshop applications
- Transport terminal lighting
- Lighting for laboratories without combustible fumes

COMPLIANCE STANDARD

- Luminaire: EN 60598-1:09, EN 60598-2-1:97, EN 55015 ed.3:07+A1:08+A2:09, EN61547 ed.2:10 EN61000-3-2 ed.3:06+A1:10+A2:10

WARRANTY

- 5 year warranty on luminaire body
- 5 year warranty on internal components



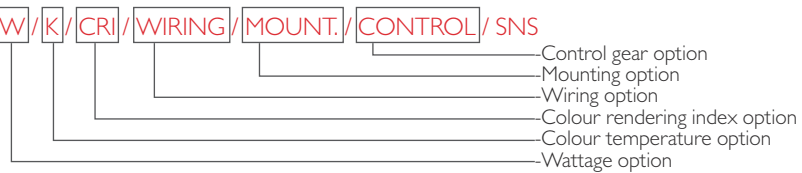
GENLUX LIGHTING

a lighting technology company

A division of
ACTOM (Pty) LTD

ORDERING DETAILS

PRODUCT CODE: CHIEVOLED/**W**/**K**/**CRI**/**WIRING**/**MOUNT.**/**CONTROL**/**SNS**



LED options:

2ft. (662 mm) (W)	10W	12W	15W	
4ft. (1272 mm) (W)	18W	22W	30W	46W
5ft. (1572 mm) (W)	22W	27W	37W	58W

Colour temperature:

Options (K)	4000K	5000K	5000K	6500K
-------------	-------	-------	-------	-------

Colour rendering index:

Options	> 80	> 90
---------	------	------

Wiring option:

Phase options	1F	3F
---------------	----	----

Mounting options:

Options available	SUSP	CEIL	WALL
-------------------	------	------	------

Control gear options:

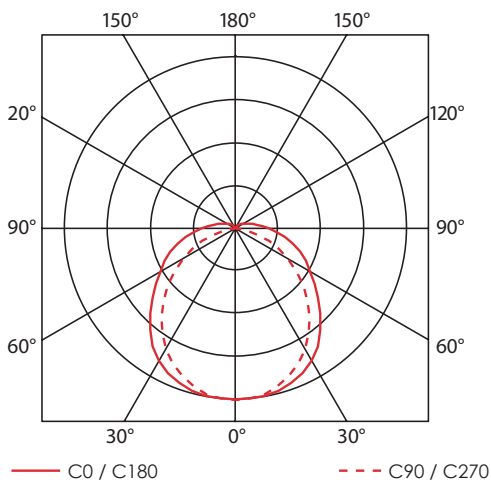
Options available	STD	DALI	EMG	DALI+EMG
-------------------	-----	------	-----	----------

Sensor option:

Phase options	YES	NO
---------------	-----	----

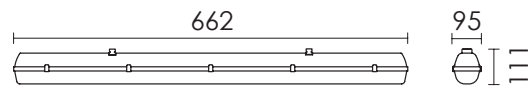
PHOTOMETRIC DIAGRAM

(IES Files available on request)

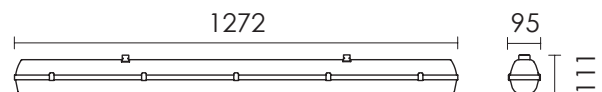


DIMENSIONS

- 2 ft. (662mm)



- 4 ft. (1272mm)



- 5 ft. (1572mm)

